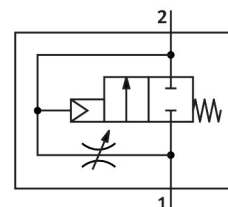


Shut off valve HEL-3/8-D-MIDI-NPT

Part number: 173919

FESTO



Data sheet

Feature	Value
Width dimension	55 mm
Exhaust air function	With flow control option
Actuation type	Pneumatic
Sealing principle	Soft
Mounting position	Any
Manual override	None
Structural design	Piston gate valve
Reset method	Mechanical spring
Type of control	Direct
Flow direction	Non-reversible
Valve function	2/2, closed, monostable
Operating pressure	0.3 MPa...1.6 MPa 3 bar...16 bar
b-value	0.39
C value	16.5 l/sbar
Standard nominal flow rate	3200 l/min
Operating medium	Compressed air as per ISO 8573-1:2010 [7:4:4] Inert gas
Information on operating and pilot media	Operation with oil lubrication possible (required for further use)
Corrosion resistance class (CRC)	2 - Moderate corrosion stress
LABS (PWIS) conformity	VDMA24364-B1/B2-L
Air quality class at the output	Compressed air as per ISO 8573-1:2010 [7:4:4] Inert gas
Temperature of medium	-10 °C...60 °C
Ambient temperature	-10 °C...60 °C
Product weight	270 g
Type of mounting	Line installation With accessories
Pneumatic connection 1	3/8 NPT
Pneumatic connection 2	3/8 NPT
Note on materials	RoHS-compliant

Feature	Value
Seals material	NBR
Housing material	Die-cast aluminum