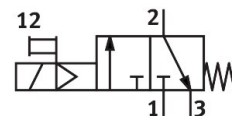


On/off valve HEE-1-D-MAXI-110-NPT

Part number: 173915

FESTO



Data sheet

Feature	Value
Width dimension	65 mm
Structural design	Piston gate valve
Actuation type	Electrical
Sealing principle	Soft
Exhaust air function	Without flow control option
Manual override	Detenting
Reset method	Mechanical spring
Type of control	Pilot-controlled
Valve function	3/2, closed, monostable
Operating pressure	0.25 MPa...1.6 MPa 2.5 bar...16 bar
Lap	Overlap
C value	27.6 l/sbar
b-value	0.32
Normal nominal flow rate (normalized to DIN 1343)	6500 l/min
Duty cycle	100%
Coil characteristics	110 V AC: 50/60 Hz, initial power 5.0 VA, holding power 3.7 VA
Permissible voltage fluctuations	+/- 10 %
Operating medium	Compressed air as per ISO 8573-1:2010 [7:4:4] Inert gas
Information on operating and pilot media	Operation with oil lubrication possible (required for further use)
Corrosion resistance class (CRC)	2 - Moderate corrosion stress
Note on materials	RoHS-compliant
LABS (PWIS) conformity	VDMA24364-B1/B2-L
Temperature of medium	-10 °C...60 °C
Ambient temperature	-10 °C...60 °C
CE marking (see declaration of conformity)	As per EU low voltage directive
UKCA marking (see declaration of conformity)	To UK instructions for electrical equipment
Type of mounting	Line installation With accessories
Mounting position	Any
Flow direction	Non-reversible

Feature	Value
Product weight	800 g
Pneumatic connection 1	1 NPT
Pneumatic connection 2	1 NPT
Pneumatic connection 3	G3/8
Air quality class at the output	Compressed air as per ISO 8573-1:2010 [7:4:4] Inert gas
Pilot air supply port	Internal
Electrical connection	Form C Plug as per DIN EN 175301-803
Signal status display	With accessories
Seals material	NBR
Housing material	Die-cast aluminum