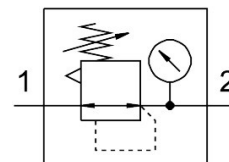


Pressure regulator LR-1/2-D-7-MIDI-NPT

Part number: 173662

FESTO



Data sheet

Feature	Value
Size	Midi
Series	D
Mounting position	Any
Controller function	Outlet pressure constant
Operating pressure	1.6 MPa 16 bar
Pressure regulation range	0.5 bar...7 bar
Max. pressure hysteresis	0.02 MPa 0.2 bar 2.9 psi
Standard nominal flow rate	4000 l/min
Operating medium	Compressed air as per ISO 8573-1:2010 [7:4:4] Inert gas
Information on operating and pilot media	Operation with oil lubrication possible (required for further use)
Corrosion resistance class (CRC)	2 - Moderate corrosion stress
LABS (PWIS) conformity	VDMA24364-B1/B2-L
Air quality class at the output	Compressed air as per ISO 8573-1:2010 [7:4:4] Inert gas
Temperature of medium	-10 °C...60 °C
Ambient temperature	-10 °C...60 °C
Product weight	720 g
Type of mounting	Front panel mounting Line installation With mounting bracket Optionally:
Pneumatic connection 1	1/2 NPT
Pneumatic connection 2	1/2 NPT
Note on materials	RoHS-compliant
Seals material	NBR
Housing material	Die-cast zinc