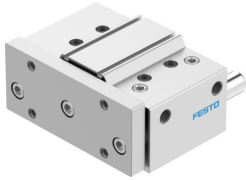


Guided actuator DFM-80-50-P-A-KF

Part number: 170961

FESTO



Data sheet

Feature	Value
Distance of centre of gravity of payload to yoke plate xs	125 mm
Stroke	50 mm
Piston diameter	80 mm
Drive unit operating mode	Yoke
Cushioning	Elastic cushioning rings/pads at both ends
Mounting position	Any
Guide	Recirculating ball bearing guide
Structural design	Guide
Position sensing	For proximity sensor
Operating pressure	0.05 MPa...1 MPa 0.5 bar...10 bar
Max. speed	0.4 m/s
Mode of operation	Double-acting
Operating medium	Compressed air as per ISO 8573-1:2010 [7:4:4]
Information on operating and pilot media	Operation with oil lubrication possible (required for further use)
Corrosion resistance class (CRC)	0 - No corrosion stress
LABS (PWIS) conformity	VDMA24364-B1/B2-L
Ambient temperature	-5 °C...60 °C
Impact energy in the end positions	0.75 Nm
Max. force Fy	2048 N
Max. force Fy static	3120 N
Max. force Fz	2048 N
Max. force Fz static	3120 N
Max. torque Mx	158.67 Nm
Max. static moment Mx	241.8 Nm
Max. torque My	69.62 Nm
Max. static moment My	106.1 Nm
Max. torque Mz	69.62 Nm
Max. static moment Mz	106.1 Nm
Max. permissible torque load Mx as a function of the stroke	35.04 Nm
Max. payload as a function of the stroke at defined distance xs	275 N
Theoretical force at 6 bar, retracting	2827 N

Feature	Value
Theoretical force at 6 bar, advancing	3016 N
Moving mass	4092 g
Product weight	7582 g
Center of gravity of the moving mass as a function of the stroke	47.2 mm
Alternative connections	See product drawing
Pneumatic connection	G3/8
Note on materials	RoHS-compliant
Cover material	Wrought aluminum alloy
Seals material	NBR
Housing material	Wrought aluminum alloy
Piston rod material	High-alloy stainless steel