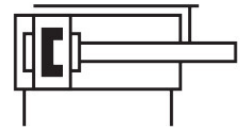
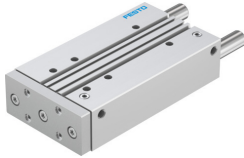


Guided actuator DFM-50-200-P-A-GF

Part number: 170877

FESTO



Data sheet

Feature	Value
Distance of centre of gravity of payload to yoke plate xs	50 mm
Stroke	200 mm
Piston diameter	50 mm
Drive unit operating mode	Yoke
Cushioning	Elastic cushioning rings/pads at both ends
Mounting position	Any
Guide	Sliding guide
Structural design	Guide
Position sensing	For proximity sensor
Operating pressure	0.1 MPa...1 MPa 1 bar...10 bar
Max. speed	0.6 m/s
Mode of operation	Double-acting
Operating medium	Compressed air as per ISO 8573-1:2010 [7:4:4]
Information on operating and pilot media	Operation with oil lubrication possible (required for further use)
Corrosion resistance class (CRC)	1 - Low corrosion stress
LABS (PWIS) conformity	VDMA24364-B1/B2-L
Ambient temperature	-20 °C...80 °C
Impact energy in the end positions	1 Nm
Max. force Fy	1533 N
Max. force Fy static	1533 N
Max. force Fz	1533 N
Max. force Fz static	1533 N
Max. torque Mx	84.33 Nm
Max. static moment Mx	84.33 Nm
Max. torque My	69.77 Nm
Max. static moment My	69.77 Nm
Max. torque Mz	69.77 Nm
Max. static moment Mz	69.77 Nm
Max. permissible torque load Mx as a function of the stroke	10.62 Nm
Max. payload as a function of the stroke at defined distance xs	174 N
Theoretical force at 6 bar, retracting	1057 N

Feature	Value
Theoretical force at 6 bar, advancing	1178 N
Moving mass	3935 g
Product weight	8238 g
Alternative connections	See product drawing
Pneumatic connection	G1/4
Note on materials	RoHS-compliant
Cover material	Wrought aluminum alloy
Seals material	NBR
Housing material	Wrought aluminum alloy
Piston rod material	High-alloy stainless steel