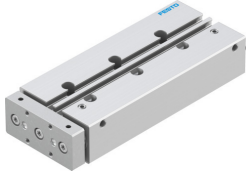


Guided actuator DFM-12-100-P-A-GF

Part number: 170831

FESTO



Data sheet

Feature	Value
Distance of centre of gravity of payload to yoke plate xs	25 mm
Stroke	100 mm
Piston diameter	12 mm
Drive unit operating mode	Yoke
Cushioning	Elastic cushioning rings/pads at both ends
Mounting position	Any
Guide	Sliding guide
Structural design	Guide
Position sensing	For proximity sensor
Operating pressure	0.2 MPa...1 MPa 2 bar...10 bar
Max. speed	0.8 m/s
Mode of operation	Double-acting
Operating medium	Compressed air as per ISO 8573-1:2010 [7:4:4]
Information on operating and pilot media	Operation with oil lubrication possible (required for further use)
Corrosion resistance class (CRC)	1 - Low corrosion stress
LABS (PWIS) conformity	VDMA24364-B1/B2-L
Cleanroom class	Class 7 according to ISO 14644-1
Ambient temperature	-20 °C...80 °C
Impact energy in the end positions	0.07 Nm
Max. force Fy	240 N
Max. force Fy static	240 N
Max. force Fz	240 N
Max. force Fz static	240 N
Max. torque Mx	4.92 Nm
Max. static moment Mx	4.92 Nm
Max. torque My	3.74 Nm
Max. static moment My	3.74 Nm
Max. torque Mz	3.74 Nm
Max. static moment Mz	3.74 Nm
Max. permissible torque load Mx as a function of the stroke	0.47 Nm
Max. payload as a function of the stroke at defined distance xs	19 N

Feature	Value
Theoretical force at 6 bar, retracting	51 N
Theoretical force at 6 bar, advancing	68 N
Moving mass	318 g
Product weight	779 g
Alternative connections	See product drawing
Pneumatic connection	M5
Note on materials	RoHS-compliant
Cover material	Wrought aluminum alloy
Seals material	NBR
Housing material	Wrought aluminum alloy
Piston rod material	High-alloy stainless steel