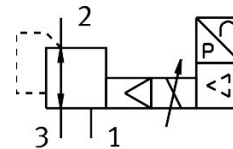


Proportional pressure control valve MPPE-3-1/2- -B

Part number: 164332

FESTO



Data sheet

Feature	Value
Nominal width pressurization	11 mm
Exhaust nominal width	12 mm
Actuation type	Electrical
Sealing principle	Soft
Mounting position	Any
Structural design	Pilot-controlled piston control valve
Safety instructions	MPPE-B safety position: if the supply cable breaks, the outlet pressure is maintained in uncontrolled form.
Operating pressure	0 bar...10 bar
Pressure regulation range	0 bar...10 bar
Inlet pressure 1	11 bar...12 bar
Max. pressure hysteresis	0.05 bar
Switching time off	535 ms
On switching time	170 ms
DC operating voltage range	18 V...30 V
Reference voltage	10 V
Residual ripple	10 %
Setpoint/actual values	Optionally: Voltage type 0 - 10 V Current type 4–20 mA
Operating medium	Compressed air as per ISO 8573-1:2010 [7:4:4] Inert gas
Certification	RCM compliance mark
CE marking (see declaration of conformity)	As per EU EMC directive
Corrosion resistance class (CRC)	2 - Moderate corrosion stress
LABS (PWIS) conformity	VDMA24364-B2-L
Temperature of medium	0 °C...60 °C
Degree of protection	IP65
Ambient temperature	0 °C...50 °C
Product weight	2400 g

Feature	Value
Electrical connection	8-pin M16x0.75 Plug as per DIN 45326 Round design
Type of mounting	With through-hole
Pneumatic connection 1	G1/2
Pneumatic connection 2	G1/2
Pneumatic connection 3	G1/2
Note on materials	RoHS-compliant
Housing material	Wrought aluminum alloy
Diaphragm material	NBR