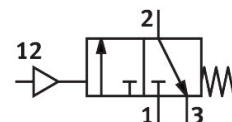
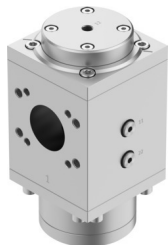


# Shut off valve PVEL-P-124-HP7

Part number: 1629205

**FESTO**



## Data sheet

Feature	Value
Series	L
Nominal width DN	54
Structural design	Piston gate valve
Actuation type	Pneumatic
Sealing principle	Soft
Exhaust air function	Without flow control option
Reset method	Mechanical spring
Type of control	Direct
Valve function	3/2, closed, monostable
Operating pressure	0 MPa...4.2 MPa 0 bar...42 bar
Pilot pressure	9 bar...42 bar
Operating medium	Compressed air as per ISO 8573-1:2010 [7:4:4] Inert gas
Information on operating and pilot media	Operation with oil lubrication possible (required for further use)
Corrosion resistance class (CRC)	2 - Moderate corrosion stress
Note on materials	RoHS-compliant
LABS (PWIS) conformity	VDMA24364 zone III
Temperature of medium	5 °C...50 °C
Ambient temperature	5 °C...50 °C
CE marking (see declaration of conformity)	as per EU pressure equipment directive
UKCA marking (see declaration of conformity)	according to UK regulations for pressure equipment
For use in the food industry	See supplementary material information
Mounting position	Any
Product weight	7250 g
Pneumatic connection 3	G1/2
Pilot air port 12	G1/4
Pilot air supply port	External
Piston slide material	Wrought aluminum alloy
Seals material	NBR PE
Housing material	Wrought aluminum alloy