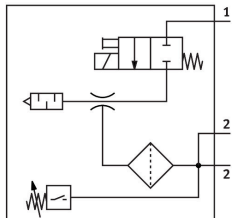


Vacuum generator VADM-70-P

Part number: 162514

FESTO



Data sheet

| Feature | Value |
|-------------------------------|--|
| Nominal width of Laval nozzle | 0.7 mm |
| Width dimension | 15 mm |
| Muffler construction type | Closed |
| Mounting position | Any |
| Ejector characteristics | High vacuum |
| Grade of filtration | 40 µm |
| Manual override | Non-detenting |
| Integrated function | Shut off valve, electric Compressed air filter Vacuum switch |
| Measured variable | Relative pressure |
| Measuring principle | Piezoresistive |
| Switching element function | N/O contact |
| Switching function | Threshold value comparator |
| Valve function | Closed |
| Reverse polarity protection | for all electrical connections |
| Display type | LED |
| Setting range hysteresis | -50 kPa...-5 kPa -0.5 bar...-0.05 bar |
| Hysteresis setting range | -7.25 psi...-0.725 psi |
| Setting options | Potentiometer |
| Switching status indication | Optical |
| Setting range threshold value | -90 kPa...0 kPa -0.9 bar...0 bar |
| Threshold value setting range | -13.05 psi...0 psi |
| Operating pressure | 0.15 MPa...0.8 MPa 1.5 bar...8 bar 21.75 psi...116 psi |
| Max. vacuum | 85 % |
| Nominal operating pressure | 0.6 MPa 6 bar 87 psi |

| Feature | Value |
|---|--|
| Air supply time at nominal operating pressure | 2.2 s |
| DC operating voltage range | 21.6 V...26.4 V |
| Duty cycle | 100% |
| Switching output | PNP |
| Certification | RCM compliance mark c UL us - Recognized (OL) |
| CE marking (see declaration of conformity) | As per EU EMC directive |
| Operating medium | Compressed air as per ISO 8573-1:2010 [7:4:4] |
| Information on operating and pilot media | Operation with oil lubrication not possible |
| Corrosion resistance class (CRC) | 2 - Moderate corrosion stress |
| LABS (PWIS) conformity | VDMA24364-B1/B2-L |
| Temperature of medium | 0 °C...60 °C |
| Degree of protection | IP65 |
| Ambient temperature | 0 °C...50 °C |
| Product weight | 145 g |
| Pressure measuring range | 0 MPa...0.1 MPa 0 bar...1 bar 0 psi...14.5 psi |
| Electrical connection | 4-pin M8x1 Plug |
| Type of mounting | With through-hole With internal thread Optionally: |
| Pneumatic connection 1 | M5 |
| Pneumatic connection 3 | Pneumatic muffler integrated |
| Vacuum connection | G1/8 |
| Note on materials | RoHS-compliant |
| Seals material | NBR |
| Female nozzle material | Brass, nickel-plated |
| Compressed air filter material | PA |
| Material of filter housing | PC |
| Housing material | Wrought aluminum alloy |
| Muffler material | PE POM |
| Material of piston | POM |
| Material of jet nozzle | Brass, nickel-plated |