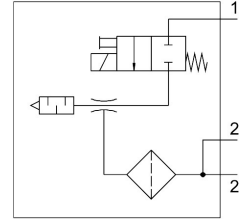
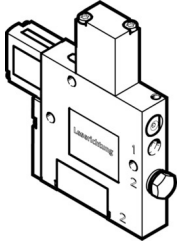


# Vacuum generator VADM-70

Part number: 162501

**FESTO**



## Data sheet

| Feature                                       | Value  |
|---|--|
| Nominal width of Laval nozzle                 | 0.7 mm   |
| Width dimension                               | 15 mm  |
| Muffler construction type                     | Closed   |
| Mounting position                             | Any  |
| Ejector characteristics                       | High vacuum  |
| Grade of filtration                           | 40 µm  |
| Manual override                               | Non-detenting  |
| Integrated function                           | Shut off valve, electric<br>Compressed air filter            |
| Valve function                                | Closed   |
| Operating pressure                            | 0.15 MPa...0.8 MPa<br>1.5 bar...8 bar<br>21.75 psi...116 psi |
| Max. vacuum                                   | 85 %   |
| Nominal operating pressure                    | 0.6 MPa<br>6 bar<br>87 psi                                   |
| Air supply time at nominal operating pressure | 2.2 s  |
| DC operating voltage range                    | 21.6 V...26.4 V  |
| Duty cycle                                    | 100%   |
| Certification                                 | c UL us - Recognized (OL)                                    |
| Operating medium                              | Compressed air as per ISO 8573-1:2010 [7:4:4]                |
| Information on operating and pilot media      | Operation with oil lubrication not possible                  |
| Corrosion resistance class (CRC)              | 2 - Moderate corrosion stress                                |
| LABS (PWIS) conformity                        | VDMA24364-B1/B2-L  |
| Temperature of medium                         | 0 °C...60 °C   |
| Degree of protection                          | IP65   |
| Ambient temperature                           | 0 °C...60 °C   |
| Product weight                                | 140 g  |
| Electrical connection                         | Plug   |

| Feature                        | Value  |
|--------------------------------|--|
| Type of mounting               | With through-hole<br>With internal thread<br>Optionally: |
| Pneumatic connection 1         | M5   |
| Pneumatic connection 3         | Pneumatic muffler integrated                             |
| Vacuum connection              | G1/8   |
| Note on materials              | RoHS-compliant   |
| Seals material                 | NBR  |
| Female nozzle material         | Brass, nickel-plated                                     |
| Compressed air filter material | PA   |
| Material of filter housing     | PC   |
| Housing material               | Wrought aluminum alloy                                   |
| Muffler material               | PE<br>POM  |
| Material of piston             | POM  |
| Material of jet nozzle         | Brass, nickel-plated                                     |