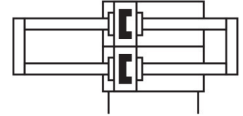
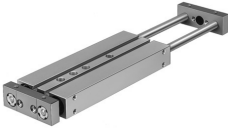


# Dual piston rod cylinder DPZJ-16-25-P-A-KF-S2

Part number: 162048

FESTO



## Data sheet

Feature	Value
Stroke	25 mm
Adjustable end position range/length	10 mm
Piston diameter	16 mm
Drive unit operating mode	Yoke
Cushioning	Elastic cushioning rings/pads at both ends
Mounting position	Any
Guide	Recirculating ball bearing guide
Structural design	Guide
Position sensing	For proximity sensor
Variants	Through piston rod
Operating pressure	0.1 MPa...1 MPa 1 bar...10 bar
Max. speed	1 m/s
Mode of operation	Double-acting
Operating medium	Compressed air as per ISO 8573-1:2010 [7:4:4]
Information on operating and pilot media	Operation with oil lubrication possible (required for further use)
Corrosion resistance class (CRC)	0 - No corrosion stress
LABS (PWIS) conformity	VDMA24364-B1/B2-L
Ambient temperature	-20 °C...80 °C
Impact energy in the end positions	0.15 Nm
Theoretical force at 6 bar, retracting	180 N
Theoretical force at 6 bar, advancing	180 N
Alternative connections	See product drawing
Pneumatic connection	M5
Cover material	Wrought aluminum alloy
Seals material	NBR
Housing material	Wrought aluminum alloy
Piston rod material	Case-hardened steel