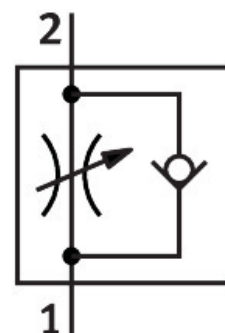


One-way flow control valve CRGRLA-1/8-B

Part number: 161404

FESTO



Data sheet

| Feature | Value |
|--|--|
| Valve function | Flow control non-return function |
| Pneumatic connection 1 | G1/8 |
| Pneumatic connection 2 | G1/8 |
| Actuation type | Manual |
| Adjusting element | Slotted screw |
| Type of mounting | Screw-in |
| Standard nominal flow rate in flow control direction | 340 l/min |
| Standard nominal flow rate in non-return direction | 260 l/min...420 l/min |
| Operating pressure | 0.03 MPa...1 MPa 0.3 bar...10 bar 4.35 psi...145 psi |
| Ambient temperature | -20 °C...80 °C |
| Maritime classification | See certificate |
| Explosion prevention and protection | Observe the information on the certificate Zone 1 (ATEX) Zone 2 (ATEX) Zone 21 (ATEX) Zone 22 (ATEX) |
| Mounting position | Any |
| Rotatability | 360 deg/continuous swiveling not permissible |
| Standard flow rate in flow control direction 6 -> 0 bar | 580 l/min |
| Standard flow rate in non-return direction at 6 -> 0 bar | 530 l/min...590 l/min |
| Operating medium | Compressed air as per ISO 8573-1:2010 [7:4:4] |
| Information on operating and pilot media | Operation with oil lubrication possible (required for further use) |
| LABS (PWIS) conformity | VDMA24364-B2-L |

| Feature | Value |
|--|---|
| Suitability for the production of Li-ion batteries | Product corresponds to Festo's internal product definition for use in battery production: Metals with more than 1% by mass of copper, zinc or nickel are excluded from use. The exceptions are nickel in steel, chemically nickel-plated surfaces, circuit boards, cables, electrical plug connectors and coils |
| Cleanroom class | Class 4 according to ISO 14644-1 |
| Storage temperature | -10 °C...40 °C |
| For use in the food industry | See supplementary material information |
| Temperature of medium | -10 °C...60 °C |
| Nominal width | 4 mm |
| Max. tightening torque | 6 Nm |
| Permissible actuation moment, adjusting screw | 0.5 Nm |
| Product weight | 37.8 g |
| Note on materials | RoHS-compliant |
| Seals material | FPM PVC |
| Hollow bolt material | High-alloy steel |
| Material of adjusting screw | High-alloy stainless steel |
| Swivel joint material | High-alloy stainless steel |