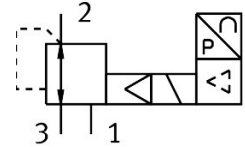


Proportional pressure control valve MPPE-3-1/2-1-010-B

Part number: 161172

FESTO



Data sheet

Feature	Value
Nominal width pressurization	11 mm
Exhaust nominal width	12 mm
Actuation type	Electrical
Sealing principle	Soft
Mounting position	Any
Structural design	Pilot-controlled piston control valve
Short-circuit protection	For all electrical connections
Safety instructions	MPPE-B safety position: if the supply cable breaks, the outlet pressure is maintained in uncontrolled form.
Reverse polarity protection	for all electrical connections
Valve function	3-way proportional pressure control valve closed
Operating pressure	0.2 MPa 2 bar
Pressure regulation range MPa	0 MPa...0.1 MPa
Pressure regulation range	0 bar...1 bar
Inlet pressure 1	1.5 bar...2 bar
Inlet pressure 1 MPa	0.15 MPa...0.2 MPa
Max. pressure hysteresis	0.003 MPa 0.03 bar
Switching time off	500 ms
On switching time	70 ms
DC operating voltage range	18 V...30 V
Reference voltage	10 V
Residual ripple	10 %
Setpoint/actual values	Voltage type 0 - 10 V
Operating medium	Compressed air as per ISO 8573-1:2010 [7:4:4] Inert gas
Information on operating and pilot media	Operation with oil lubrication possible (required for further use)
Certification	RCM compliance mark
KC characters	KC EMC
CE marking (see declaration of conformity)	As per EU EMC directive As per EU RoHS directive

Feature	Value
UKCA marking (see declaration of conformity)	To UK instructions for EMC To UK RoHS instructions
Corrosion resistance class (CRC)	2 - Moderate corrosion stress
LABS (PWIS) conformity	VDMA24364-B2-L
Temperature of medium	0 °C...60 °C
Degree of protection	IP65
Ambient temperature	0 °C...50 °C
Product weight	2400 g
Electrical connection	8-pin M16x0.75 Plug as per DIN 45326 Round design
Type of mounting	With through-hole
Pneumatic connection 1	G1/2
Pneumatic connection 2	G1/2
Pneumatic connection 3	G1/2
Note on materials	RoHS-compliant
Housing material	Wrought aluminum alloy
Diaphragm material	NBR