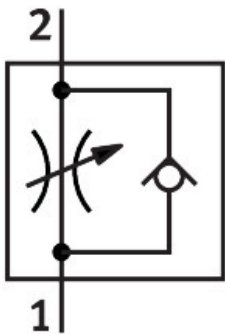


One-way flow control valve GR-M3

Part number: 15899

FESTO



Data sheet

Feature	Value
Valve function	Flow control non-return function
Pneumatic connection 1	M3
Pneumatic connection 2	M3
Adjusting element	Knurled screw
Type of mounting	Front panel mounting With through-hole Optionally:
Standard nominal flow rate in flow control direction	29.5 l/min
Standard nominal flow rate in non-return direction	26 l/min...27.5 l/min
Operating pressure	0.3 bar...8 bar
Ambient temperature	-10 °C...60 °C
Housing material	Wrought aluminum alloy
Explosion prevention and protection	Observe the information on the certificate Zone 1 (ATEX) Zone 2 (ATEX) Zone 21 (ATEX) Zone 22 (ATEX)
Mounting position	Any
Operating medium	Compressed air as per ISO 8573-1:2010 [6:4:4]
Information on operating and pilot media	Operation with oil lubrication possible (required for further use)
LABS (PWIS) conformity	VDMA24364-B1/B2-L
Temperature of medium	-10 °C...60 °C
Product weight	2.5 g
Note on materials	RoHS-compliant
Seals material	NBR
Material of adjusting screw	Brass