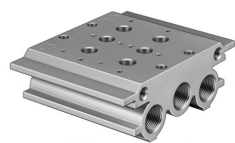


Connection block
PRS-1/4-2-B
Part number: 15861

FESTO



Data sheet

Feature	Value
Max. no. of valve positions	2
LABS (PWIS) conformity	VDMA24364-B1/B2-L
Product weight	1050 g
Type of mounting	With through-hole
Pilot exhaust air port 82	G1/8
Pilot exhaust air port 84	G1/8
Pneumatic connection 1	G1/2
Pneumatic connection 3	G1/2
Pneumatic connection 5	G1/2
Note on materials	RoHS-compliant
Material of sub-base	Aluminum