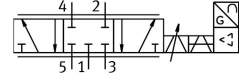


# Proportional directional control valve MPYE-5-1/8-LF-010-B

Part number: 151692

**FESTO**



## Data sheet

Feature	Value
Nominal width	4 mm
Actuation type	Electrical
Sealing principle	Hard
Mounting position	Any
Structural design	Piston gate valve
Reset method	Magnetic spring
Safety instructions	MPYE safety position: if the power supply cable breaks, the blocked mid-position is approached.
Type of control	Direct
Flow direction	Non-reversible
Valve function	5/3, closed
Reverse polarity protection	for all electrical connections
Operating pressure	0 MPa...1 MPa 0 bar...10 bar
b-value	0.12
C value	1.65 l/sbar
Standard nominal flow rate	350 l/min
Cut-off frequency	95 Hz
Max. hysteresis	0.4 %
DC operating voltage range	17 V...30 V
Residual ripple	5 %
Setpoint/actual values	Voltage type 0 - 10 V
Certification	RCM compliance mark
KC characters	KC EMC
CE marking (see declaration of conformity)	As per EU EMC directive As per EU RoHS directive
UKCA marking (see declaration of conformity)	To UK instructions for EMC To UK RoHS instructions
Operating medium	Compressed air as per ISO 8573-1:2010 [6:4:4]
Information on operating and pilot media	Operation with oil lubrication not possible
Corrosion resistance class (CRC)	2 - Moderate corrosion stress
LABS (PWIS) conformity	VDMA24364-B2-L

Feature	Value
Temperature of medium	5 °C...40 °C
Degree of protection	IP65
Ambient temperature	0 °C...50 °C
Product weight	285 g
Electrical connection	4-pin M12x1 Plug Round design
Type of mounting	With through-hole
Pneumatic connection 1	G1/8
Pneumatic connection 2	G1/8
Pneumatic connection 3	G1/8
Pneumatic connection 4	G1/8
Pneumatic connection 5	G1/8
Note on materials	RoHS-compliant
Cover material	ABS Coated
Seals material	NBR
Housing material	Aluminum Anodized