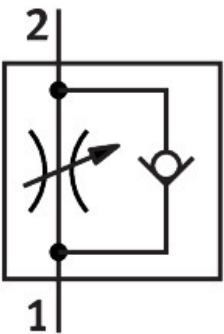


One-way flow control valve GRLA-1/2-NPT-B

Part number: 151559

FESTO



Data sheet

Feature	Value
Valve function	Exhaust air flow control non-return function
Pneumatic connection 1	1/2 NPT
Pneumatic connection 2	1/2 NPT
Adjusting element	Slotted screw
Type of mounting	Screw-in
Operating pressure	0.3 bar...10 bar
Ambient temperature	-10 °C...60 °C
Operating medium	Compressed air as per ISO 8573-1:2010 [7:4:4]
Information on operating and pilot media	Operation with oil lubrication possible (required for further use)
LABS (PWIS) conformity	VDMA24364-B2-L
Cleanroom class	Class 4 according to ISO 14644-1
Temperature of medium	-10 °C...60 °C
Note on materials	RoHS-compliant
Hollow bolt material	Wrought aluminum alloy
Nut material	Wrought aluminum alloy