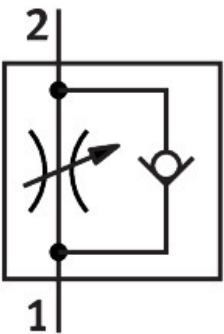


# One-way flow control valve GRLA-3/8-NPT-B

Part number: 151555

FESTO



## Data sheet

Feature	Value
Valve function	Exhaust air flow control non-return function
Pneumatic connection 1	3/8 NPT
Pneumatic connection 2	3/8 NPT
Adjusting element	Slotted screw
Type of mounting	Screw-in
Ambient temperature	-10 °C...60 °C
Operating pressure for entire temperature range	0.3 bar...10 bar
Operating medium	Compressed air as per ISO 8573-1:2010 [7:4:4]
Information on operating and pilot media	Operation with oil lubrication possible (required for further use)
LABS (PWIS) conformity	VDMA24364-B2-L
Cleanroom class	Class 4 according to ISO 14644-1
Temperature of medium	-10 °C...60 °C
Note on materials	RoHS-compliant
Seals material	NBR
Hollow bolt material	Wrought aluminum alloy
Material of adjusting screw	Brass
Nut material	Wrought aluminum alloy
Swivel joint material	Die-cast zinc