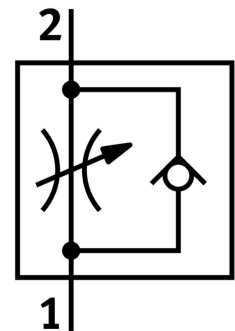


One-way flow control valve GRLZ-M5-PK-4-B

Part number: 151185

FESTO



Data sheet

Feature	Value
Valve function	Supply air flow control non-return function
Pneumatic connection 1	PK-4
Pneumatic connection 2	M5
Adjusting element	Slotted screw
Type of mounting	Screw-in
Standard nominal flow rate in flow control direction	83 l/min
Standard nominal flow rate in non-return direction	76 l/min...88 l/min
Operating pressure	0.2 bar...10 bar
Ambient temperature	-10 °C...60 °C
Explosion prevention and protection	Observe the information on the certificate Zone 1 (ATEX) Zone 2 (ATEX) Zone 21 (ATEX) Zone 22 (ATEX)
Mounting position	Any
Standard flow rate in flow control direction 6 -> 0 bar	140 l/min
Standard flow rate in non-return direction at 6 -> 0 bar	125 l/min...150 l/min
Operating medium	Compressed air as per ISO 8573-1:2010 [7:4:4]
Information on operating and pilot media	Operation with oil lubrication possible (required for further use)
LABS (PWIS) conformity	VDMA24364-B1/B2-L
Cleanroom class	Class 4 according to ISO 14644-1
Temperature of medium	-10 °C...60 °C
Nominal width	2 mm
Max. tightening torque	1.5 Nm
Product weight	10 g
Material of screwed plug	Brass Nickel-plated
Note on materials	RoHS-compliant

Feature	Value
Seals material	NBR
Material of adjusting screw	Brass
Swivel joint material	Die-cast zinc