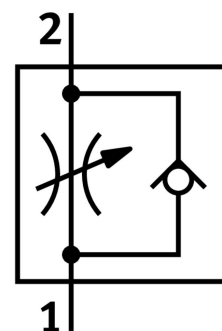


One-way flow control valve GRLZ-M5-PK-3-B

Part number: 151184

FESTO



Data sheet

| Feature | Value |
|---|--|
| Valve function | Supply air flow control non-return function |
| Pneumatic connection 1 | PK-3 |
| Pneumatic connection 2 | M5 |
| Adjusting element | Slotted screw |
| Type of mounting | Screw-in |
| Standard nominal flow rate in flow control direction | 83 l/min |
| Standard nominal flow rate in non-return direction | 72 l/min...83 l/min |
| Operating pressure | 0.2 bar...10 bar |
| Ambient temperature | -10 °C...60 °C |
| Explosion prevention and protection | Observe the information on the certificate Zone 1 (ATEX) Zone 2 (ATEX) Zone 21 (ATEX) Zone 22 (ATEX) |
| Mounting position | Any |
| Standard flow rate in flow control direction 6 → 0 bar | 140 l/min |
| Standard flow rate in non-return direction at 6 → 0 bar | 120 l/min...140 l/min |
| Operating medium | Compressed air as per ISO 8573-1:2010 [7:4:4] |
| Information on operating and pilot media | Operation with oil lubrication possible (required for further use) |
| LABS (PWIS) conformity | VDMA24364-B1/B2-L |
| Cleanroom class | Class 4 according to ISO 14644-1 |
| Temperature of medium | -10 °C...60 °C |
| Nominal width | 2 mm |
| Max. tightening torque | 1.5 Nm |
| Product weight | 10 g |
| Material of screwed plug | Brass Nickel-plated |
| Note on materials | RoHS-compliant |

| Feature | Value |
|-----------------------------|---------------|
| Seals material | NBR |
| Material of adjusting screw | Brass |
| Swivel joint material | Die-cast zinc |