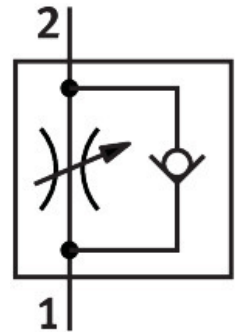


# One-way flow control valve GRLA-3/4-B

Part number: 151180

**FESTO**



## Data sheet

Feature	Value
Valve function	Exhaust air flow control non-return function
Pneumatic connection 1	G3/4
Pneumatic connection 2	G3/4
Adjusting element	Slotted screw
Type of mounting	Screw-in
Standard nominal flow rate in flow control direction	4320 l/min
Standard nominal flow rate in non-return direction	3220 l/min...4320 l/min
Ambient temperature	-10 °C...60 °C
Maritime classification	See certificate
Explosion prevention and protection	Observe the information on the certificate Zone 1 (ATEX) Zone 2 (ATEX) Zone 21 (ATEX) Zone 22 (ATEX)
Mounting position	Any
Operating pressure for entire temperature range	0.3 bar...10 bar
Standard flow rate in flow control direction 6 -> 0 bar	7300 l/min
Standard flow rate in non-return direction at 6 -> 0 bar	5440 l/min...7300 l/min
Operating medium	Compressed air as per ISO 8573-1:2010 [7:4:4]
Information on operating and pilot media	Operation with oil lubrication possible (required for further use)
LABS (PWIS) conformity	VDMA24364-B1/B2-L
Cleanroom class	Class 4 according to ISO 14644-1
Temperature of medium	-10 °C...60 °C
Max. tightening torque	60 Nm
Product weight	377 g
Note on materials	RoHS-compliant
Seals material	NBR

Feature	Value
Hollow bolt material	Wrought aluminum alloy
Material of adjusting screw	Brass
Nut material	Wrought aluminum alloy
Swivel joint material	Die-cast zinc