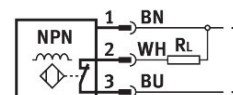
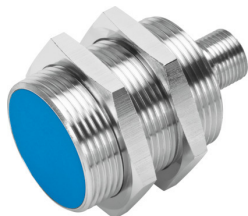


Proximity sensor SIEN-M30B-NO-S-L

Part number: 150437

FESTO



Data sheet

Feature	Value
Conforms to standard	EN 60947-5-2
Certification	RCM compliance mark c UL us - Listed (OL)
CE marking (see declaration of conformity)	As per EU EMC directive
Note on materials	RoHS-compliant
Rated operating distance	10 mm
Assured operating distance	8.1 mm
Reduction factors	Aluminum = 0.45 Stainless steel St 18/8 = 0.8 Copper = 0.4 Brass = 0.55 Steel St 37 = 1.0
Ambient temperature	-25 °C...70 °C
Repetition accuracy	0.5 mm
Switching output	NPN
Switching element function	N/C contact
Hysteresis	1.1 mm
Max. switching frequency	1200 Hz
Max. output current	200 mA
Voltage drop	2 V
Short-circuit protection	Pulsed
DC operating voltage range	10 V...30 V
Residual ripple	+/- 20 %
Idle current	10 mA
Reverse polarity protection	for all electrical connections
Electrical connection	3-pin M12x1 Plug
Size	M30x1.5
Type of mounting	With lock nut
Tightening torque	40 Nm
Mounting type	Flush
Product weight	100 g

Feature	Value
Housing material	Brass PA PBTP Chrome-plated
Switching status indication	LED yellow
Ambient temperature with flexible cable installation	-5 °C...70 °C
Degree of protection	IP67
Surge resistance	0.8 kV
LABS (PWIS) conformity	VDMA24364-B2-L
Contamination level	3
Selection of additional sensor information	With standard switching distance
Electrical output	NPN
Selection of sensor version	Standard