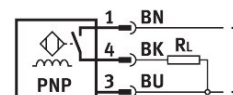
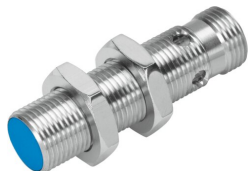


Proximity sensor SIEN-M12B-PS-S-L

Part number: 150403

FESTO



Data sheet

Feature	Value
Conforms to standard	EN 60947-5-2
Certification	RCM compliance mark c UL us - Listed (OL)
CE marking (see declaration of conformity)	As per EU EMC directive As per EU RoHS directive
UKCA marking (see declaration of conformity)	according to UK regulations for EMC (UK-E) according to UK RoHS regulations (UK-R)
Rated operating distance	2 mm
Assured operating distance	1.62 mm
Reduction factors	Aluminum = 0.4 Stainless steel St 18/8 = 0.6 Copper = 0.3 Brass = 0.5 Steel St 37 = 1.0
Ambient temperature	-25 °C...70 °C
Repetition accuracy under constant conditions	0.1 mm
Switching output	PNP
Switching element function	N/O contact
Hysteresis	0.18 mm
Max. switching frequency	3000 Hz
Max. output current	200 mA
Voltage drop	2 V
Inductive protective circuit	Installed
Short-circuit protection	Pulsed
DC operating voltage range	10 V...30 V
Residual ripple	± 10%
Idle current	10 mA
Reverse polarity protection	for all electrical connections
Electrical connection 1, connection type	Plug
Electrical connection 1, connection technology	M12x1 A-coded as per EN 61076-2-101
Electrical connection 1, number of pins/wires	4
Electrical connection 1, type of mounting	Screw-type lock not rotatable Compatible with rotatable screw-type lock

Feature	Value
Size	M12x1
Type of mounting	With lock nut
Mounting type	Flush
Product weight	30 g
Housing material	Brass PBTP Nickel-plated
Switching status indication	LED yellow
Ambient temperature with flexible cable installation	-5 °C...70 °C
Degree of protection	IP65 IP67
Corrosion resistance class (CRC)	2 - Moderate corrosion stress
LABS (PWIS) conformity	VDMA24364-B2-L
Selection of additional sensor information	With standard switching distance
Electrical output	PNP
Selection of sensor version	Standard