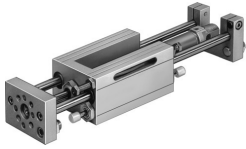


# Linear unit

## SLE-32- -KF-A

Part number: 150093

FESTO



## Data sheet

Feature	Value
Stroke	10 mm...500 mm
Piston diameter	32 mm
Drive unit operating mode	Yoke
Cushioning	Pneumatic shock absorber, hard characteristic curve
Mounting position	Any
Guide	Recirculating ball bearing guide
Structural design	Guide
Position sensing	For proximity sensor For inductive proximity sensors
Operating pressure	0.15 MPa...1.2 MPa 1.5 bar...12 bar
Mode of operation	Double-acting
Operating medium	Compressed air as per ISO 8573-1:2010 [7:4:4]
Information on operating and pilot media	Operation with oil lubrication possible (required for further use)
Corrosion resistance class (CRC)	0 - No corrosion stress
LABS (PWIS) conformity	VDMA24364-B2-L
Ambient temperature	-20 °C...80 °C
Theoretical force at 6 bar, retracting	415 N
Theoretical force at 6 bar, advancing	483 N
Moving mass at 0 mm stroke	1500 g
Additional moving mass per 10 mm stroke	31 g
Basic weight with 0 mm stroke	4300 g
Additional weight per 10 mm stroke	57 g
Pneumatic connection	G1/8
Cover material	Cast aluminum
Seals material	PA
Housing material	Cast aluminum
Piston rod material	High-alloy steel
Material of cylinder barrel	Wrought aluminum alloy