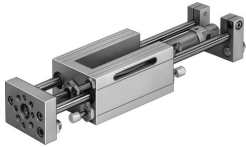


Linear unit

SLE-20- -KF-A

Part number: 150091

FESTO



Data sheet

Feature	Value
Stroke	10 mm...320 mm
Piston diameter	20 mm
Drive unit operating mode	Yoke
Cushioning	Pneumatic shock absorber, hard characteristic curve
Mounting position	Any
Guide	Recirculating ball bearing guide
Structural design	Guide
Position sensing	For proximity sensor For inductive proximity sensors
Operating pressure	0.25 MPa...1 MPa 2.5 bar...10 bar
Mode of operation	Double-acting
Operating medium	Compressed air as per ISO 8573-1:2010 [7:4:4]
Information on operating and pilot media	Operation with oil lubrication possible (required for further use)
Corrosion resistance class (CRC)	0 - No corrosion stress
LABS (PWIS) conformity	VDMA24364-B2-L
Ambient temperature	-20 °C...80 °C
Theoretical force at 6 bar, retracting	158 N
Theoretical force at 6 bar, advancing	188 N
Moving mass at 0 mm stroke	500 g
Additional moving mass per 10 mm stroke	12 g
Basic weight with 0 mm stroke	1882 g
Additional weight per 10 mm stroke	19 g
Pneumatic connection	G1/8
Cover material	Wrought aluminum alloy
Seals material	PA
Housing material	Aluminum
Piston rod material	High-alloy stainless steel
Material of cylinder barrel	High-alloy stainless steel