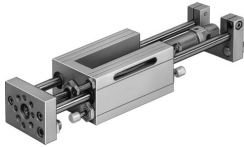


# Linear unit

## SLE-16- -KF-A

Part number: 150090

FESTO



## Data sheet

Feature	Value
Stroke	10 mm...200 mm
Piston diameter	16 mm
Drive unit operating mode	Yoke
Cushioning	Pneumatic shock absorber, hard characteristic curve
Mounting position	Any
Guide	Recirculating ball bearing guide
Structural design	Guide
Position sensing	For proximity sensor For inductive proximity sensors
Operating pressure	0.25 MPa...1 MPa 2.5 bar...10 bar
Mode of operation	Double-acting
Operating medium	Compressed air as per ISO 8573-1:2010 [7:4:4]
Information on operating and pilot media	Operation with oil lubrication possible (required for further use)
Corrosion resistance class (CRC)	0 - No corrosion stress
LABS (PWIS) conformity	VDMA24364-B2-L
Ambient temperature	-20 °C...80 °C
Theoretical force at 6 bar, retracting	104 N
Theoretical force at 6 bar, advancing	121 N
Moving mass at 0 mm stroke	230 g
Additional moving mass per 10 mm stroke	8 g
Basic weight with 0 mm stroke	913 g
Additional weight per 10 mm stroke	13 g
Pneumatic connection	M5
Cover material	Wrought aluminum alloy
Seals material	PA
Housing material	Aluminum
Piston rod material	High-alloy stainless steel
Material of cylinder barrel	High-alloy stainless steel