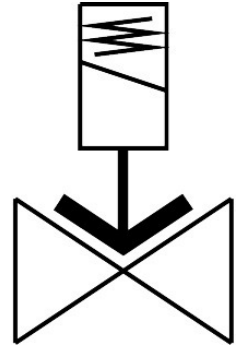


# Air solenoid valve

## VZWF-L-M22C-N2-500-3AP4-6

Part number: 1492357

**FESTO**



### Data sheet

| Feature                          | Value  |
|----------------------------------|--|
| Structural design                | Diaphragm valve<br>Force pilot operated  |
| Actuation type                   | Electrical   |
| Sealing principle                | Soft   |
| Mounting position                | Magnet, upright  |
| Type of mounting                 | Line installation  |
| Fitting connection               | 2 NPT  |
| Electrical connection            | Form A<br>Plug<br>as per EN 175301-803<br>Rectangular design   |
| Nominal width                    | 50 mm  |
| Valve function                   | 2/2, closed, monostable  |
| Manual override                  | None   |
| Flow direction                   | Non-reversible   |
| Medium                           | Compressed air as per ISO 8573-1:2010 [7:--:]<br>Inert gas<br>Mineral oil<br>Water<br>Neutral liquids<br>Other flow media on request |
| Nominal pressure of fitting PN   | 40   |
| Pressure difference              | 0 MPa<br>0 psi   |
| Differential pressure            | 0 bar  |
| Coil characteristics             | 230 V AC: 50/60 Hz, initial power 30.0 VA, holding power 30.0 VA   |
| Permissible voltage fluctuations | +/- 10 %   |
| Medium pressure                  | 0 MPa...0.6 MPa<br>0 bar...6 bar<br>0 psi...87 psi   |

| Feature                                      | Value   |
|--|---|
| Max. viscosity                               | 22 mm <sup>2</sup> /s   |
| Temperature of medium                        | -10 °C...80 °C  |
| Ambient temperature                          | -10 °C...35 °C  |
| Leak rate to EN 12266-1                      | A   |
| Flow rate Kv                                 | 28 m <sup>3</sup> /h  |
| Standard nominal flow rate                   | 29900 l/min   |
| On switching time                            | 1220 ms   |
| Switching time off                           | 2140 ms   |
| Note on materials                            | RoHS-compliant  |
| LABS (PWIS) conformity                       | VDMA24364 zone III  |
| Housing material                             | Cast brass  |
| Material number of housing                   | CW617N  |
| Seals material                               | NBR   |
| Material of screws                           | High-alloy stainless steel  |
| Material number of screw                     | 1.4301  |
| Product weight                               | 6500 g  |
| CE marking (see declaration of conformity)   | as per EU pressure equipment directive<br>As per EU low voltage directive                         |
| UKCA marking (see declaration of conformity) | according to UK regulations for pressure equipment<br>To UK instructions for electrical equipment |
| Degree of protection                         | IP65  |
| Corrosion resistance class (CRC)             | 1 - Low corrosion stress  |