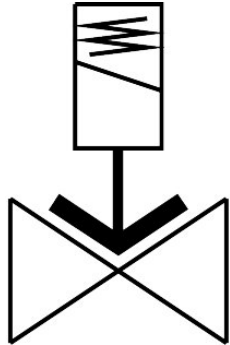


# Air solenoid valve

## VZWF-B-L-M22C-N12-135-3AP4-10

Part number: 1492352

FESTO



### Data sheet

| Feature                          | Value   |
|----------------------------------|---|
| Structural design                | Diaphragm valve<br>Force pilot operated   |
| Actuation type                   | Electrical  |
| Sealing principle                | Soft  |
| Mounting position                | Magnet, upright   |
| Type of mounting                 | Line installation   |
| Fitting connection               | 1/2 NPT   |
| Electrical connection            | Form A<br>Plug<br>as per EN 175301-803<br>Rectangular design  |
| Nominal width                    | 13.5 mm   |
| Valve function                   | 2/2, closed, monostable   |
| Manual override                  | None  |
| Flow direction                   | Non-reversible  |
| Medium                           | Compressed air as per ISO 8573-1:2010 [7:--]<br>Inert gas<br>Mineral oil<br>Water<br>Neutral liquids<br>Other flow media on request |
| Nominal pressure of fitting PN   | 40  |
| Pressure difference              | 0 MPa<br>0 psi  |
| Differential pressure            | 0 bar   |
| Coil characteristics             | 230 V AC: 50/60 Hz, initial power 18.0 VA, holding power 15.0 VA  |
| Permissible voltage fluctuations | +/- 10 %  |
| Medium pressure                  | 0 MPa...1 MPa<br>0 bar...10 bar<br>0 psi...145 psi  |

| Feature   | Value   |
|---|---|
| Max. viscosity                                    | 22 mm <sup>2</sup> /s   |
| Temperature of medium                             | -10 °C...80 °C  |
| Ambient temperature                               | -10 °C...35 °C  |
| Leak rate to EN 12266-1                           | A   |
| Flow rate Kv                                      | 2.5 m <sup>3</sup> /h   |
| Normal nominal flow rate (normalized to DIN 1343) | 2660 l/min  |
| On switching time                                 | 130 ms  |
| Switching time off                                | 180 ms  |
| Note on materials                                 | RoHS-compliant  |
| LABS (PWIS) conformity                            | VDMA24364 zone III  |
| Housing material                                  | Cast brass  |
| Material number of housing                        | CW617N  |
| Seals material                                    | NBR   |
| Material of screws                                | High-alloy stainless steel  |
| Material number of screw                          | 1.4301  |
| Product weight                                    | 1000 g  |
| CE marking (see declaration of conformity)        | as per EU pressure equipment directive<br>As per EU low voltage directive                         |
| UKCA marking (see declaration of conformity)      | according to UK regulations for pressure equipment<br>To UK instructions for electrical equipment |
| Degree of protection                              | IP65  |
| Corrosion resistance class (CRC)                  | 1 - Low corrosion stress  |