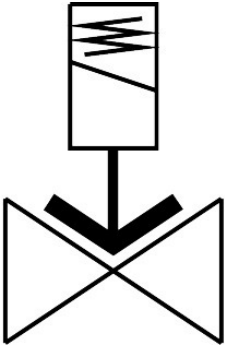


Air solenoid valve

VZWF-L-M22C-G2-500-2AP4-6

Part number: 1492213

FESTO



Data sheet

| Feature | Value |
|----------------------------------|--|
| Structural design | Diaphragm valve Force pilot operated |
| Actuation type | Electrical |
| Sealing principle | Soft |
| Mounting position | Magnet, upright |
| Type of mounting | Line installation |
| Fitting connection | G2 |
| Electrical connection | Form A Plug as per EN 175301-803 Rectangular design |
| Nominal width | 50 mm |
| Valve function | 2/2, closed, monostable |
| Manual override | None |
| Flow direction | Non-reversible |
| Medium | Compressed air as per ISO 8573-1:2010 [7:--:] Inert gas Mineral oil Water Neutral liquids Other flow media on request |
| Nominal pressure of fitting PN | 40 |
| Pressure difference | 0 MPa 0 psi |
| Differential pressure | 0 bar |
| Coil characteristics | 110 V AC: 50/60 Hz, initial power 30.0 VA, holding power 30.0 VA |
| Permissible voltage fluctuations | +/- 10 % |
| Medium pressure | 0 MPa...0.6 MPa 0 bar...6 bar 0 psi...87 psi |

| Feature | Value |
|--|---|
| Max. viscosity | 22 mm ² /s |
| Temperature of medium | -10 °C...80 °C |
| Ambient temperature | -10 °C...35 °C |
| Leak rate to EN 12266-1 | A |
| Flow rate Kv | 28 m ³ /h |
| Standard nominal flow rate | 29900 l/min |
| On switching time | 1220 ms |
| Switching time off | 2140 ms |
| Note on materials | RoHS-compliant |
| LABS (PWIS) conformity | VDMA24364 zone III |
| Housing material | Cast brass |
| Material number of housing | CW617N |
| Seals material | NBR |
| Material of screws | High-alloy stainless steel |
| Material number of screw | 1.4301 |
| Product weight | 6500 g |
| CE marking (see declaration of conformity) | as per EU pressure equipment directive As per EU low voltage directive |
| UKCA marking (see declaration of conformity) | according to UK regulations for pressure equipment To UK instructions for electrical equipment |
| Degree of protection | IP65 |
| Corrosion resistance class (CRC) | 1 - Low corrosion stress |