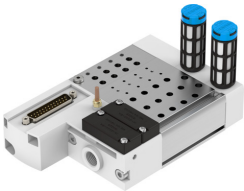


Manifold rail
VABM-C8-12E-G14-12-M1-L
Part number: 1361870



Data sheet

| Feature | Value |
|---|-------------------------|
| Width dimension | 12 mm |
| Max. no. of valve positions | 12 |
| Corrosion resistance class (CRC) | 0 - No corrosion stress |
| LABS (PWIS) conformity | VDMA24364-B1/B2-L |
| Max. tightening torque for valve mounting | 0.6 Nm |
| Max. tightening torque for wall mounting | 5 Nm |
| Product weight | 890 g |
| Pneumatic connection 1 | G1/4 |
| Pneumatic connection 3 | G1/4 |
| Pneumatic connection 5 | G1/4 |
| Note on materials | RoHS-compliant |
| Manifold rail material | Wrought aluminum alloy |