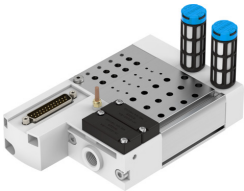


**Manifold rail**  
**VABM-C8-12E-G14-8-M1-L**  
Part number: 1361868



**Data sheet**

Feature	Value
Width dimension	12 mm
Max. no. of valve positions	8
Corrosion resistance class (CRC)	0 - No corrosion stress
LABS (PWIS) conformity	VDMA24364-B1/B2-L
Max. tightening torque for valve mounting	0.6 Nm
Max. tightening torque for wall mounting	5 Nm
Product weight	687 g
Pneumatic connection 1	G1/4
Pneumatic connection 3	G1/4
Pneumatic connection 5	G1/4
Note on materials	RoHS-compliant
Manifold rail material	Wrought aluminum alloy