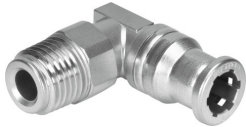


Push-in L-fitting CRQSL-1/4-6

Part number: 132599

FESTO



Data sheet

| Feature | Value |
|---|---|
| Size | Standard |
| Nominal width | 3.6 mm |
| Mounting position | Any |
| Design | L-shape |
| Pack size | 1 |
| Structural design | Push-pull principle |
| Operating pressure for entire temperature range | -0.095 MPa...1 MPa -0.95 bar...10 bar -13.775 psi...145 psi |
| Information on operating pressure | Water: max. 0.6 MPa at max. 50 °C |
| Operating medium | Compressed air as per ISO 8573-1:2010 [7:-:-] Water (liquid, ice-free) |
| Information on operating and pilot media | Operation with oil lubrication possible |
| Corrosion resistance class (CRC) | 4 - Particularly high corrosion stress |
| LABS (PWIS) conformity | VDMA24364-B1/B2-L |
| For use in the food industry | See supplementary material information |
| Ambient temperature | -15 °C...120 °C |
| Product weight | 26 g |
| Usable connector cables | PFAN |
| Type of mounting | External hexagon, AF 14 |
| Pneumatic connection 1 | External thread R1/4 |
| Pneumatic connection 2 | for pneumatic tubing outside diameter 6 mm |
| Material of screwed plug | High-alloy stainless steel |
| Note on materials | RoHS-compliant |
| Housing material | High-alloy stainless steel |
| Releasing ring material | High-alloy stainless steel |
| Material of tubing seal | FPM |
| Material of tube retaining claw | High-alloy stainless steel |
| Thrust ring material | High-alloy stainless steel |