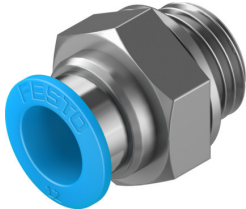


# Push-in fitting QS-G1/2-12-20

Part number: 132046

**FESTO**



## Data sheet

Feature	Value
Size	Standard
Nominal width	11 mm
Type of seal on screwed plug	Sealing ring
Mounting position	Any
Design	Straight design
Pack size	20
Structural design	Push-pull principle
Operating pressure for entire temperature range	-0.095 MPa...0.6 MPa -0.95 bar...6 bar -13.775 psi...87 psi
Temperature-dependent operating pressure	-0.095 MPa...1.4 MPa -0.95 bar...14 bar -13.775 psi...203 psi
Information on operating pressure	Water: max. 0.6 MPa at max. 50 °C
Operating medium	Compressed air as per ISO 8573-1:2010 [7::-] Water (liquid, ice-free)
Information on operating and pilot media	Operation with oil lubrication possible Water: G-thread only possible with sealing ring type OL as additional accessory
Corrosion resistance class (CRC)	1 - Low corrosion stress
LABS (PWIS) conformity	VDMA24364-B1/B2-L
Cleanroom class	Class 4 according to ISO 14644-1
Ambient temperature	-10 °C...80 °C
Nominal tightening torque	26 Nm
Tolerance for nominal tightening torque	± 20%
Product weight	39 g
Type of mounting	External hexagon, AF 24
Pneumatic connection 1	External thread G1/2
Pneumatic connection 2	for pneumatic tubing outside diameter 12 mm
Releasing ring color	Blue
Note on materials	RoHS-compliant
Housing material	Brass, nickel-plated
Releasing ring material	POM

Feature	Value
Material of tubing seal	NBR
Material of tube retaining claw	High-alloy stainless steel