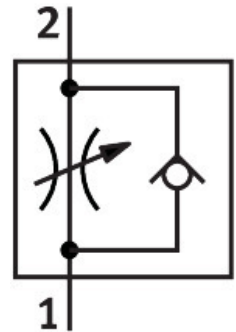


Precision one-way flow control valve GRP-160-PK-4

Part number: 12961

FESTO



Data sheet

Feature	Value
Valve function	Flow control non-return function
Pneumatic connection 1	PK-4
Pneumatic connection 2	PK-4
Actuation type	Manual
Adjusting element	Rotary knob with scale
Type of mounting	Front panel mounting
Standard nominal flow rate in flow control direction	75.8 l/min
Standard nominal flow rate in non-return direction	245 l/min
Operating pressure	0 bar...8 bar
Ambient temperature	-10 °C...50 °C
Housing material	PA-reinforced
Mounting position	Any
Operating pressure from 2 to 1	0 bar...8 bar
Standard nominal flow rate in flow control direction from 1 bar to 0 bar	38 l/min
Standard nominal flow rate in non-return direction from 1 bar to 0 bar	25 l/min...90 l/min
Standard flow rate in flow control direction 6 -> 0 bar	129 l/min
Standard flow rate in non-return direction at 6 -> 0 bar	245 l/min
Operating medium	Compressed air as per ISO 8573-1:2010 [5:4:3] Inert gas
Information on operating and pilot media	Operation with oil lubrication not possible
LABS (PWIS) conformity	VDMA24364 zone III
Temperature of medium	-10 °C...50 °C
Product weight	48 g
Note on materials	RoHS-compliant
Seals material	NBR PVC
Retaining bracket material	Wrought aluminum alloy

Feature	Value
PK connections material	Wrought aluminum alloy Brass
Material of screws	Steel