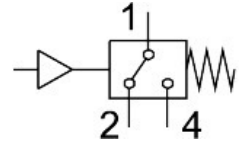


# PE converter VPE-1/8-2N-SW

Part number: 12595

**FESTO**



## Data sheet

Feature	Value
Conforms to standard	EN 60947-5-1
CE marking (see declaration of conformity)	As per EU low voltage directive
UKCA marking (see declaration of conformity)	To UK instructions for electrical equipment
Measured variable	Relative pressure
Method of measurement	Pneumatic/electric pressure transducer
Operating pressure	-0.095 MPa...0 MPa -0.95 bar...0 bar
Max. overload pressure	1 bar
Operating medium	Compressed air as per ISO 8573-1:2010 [7:4:4]
Information on operating and pilot media	Operation with oil lubrication possible
Temperature of medium	0 °C...60 °C
Ambient temperature	0 °C...60 °C
Switching output	Contact-based
Switching function	Threshold value with fixed hysteresis
Switching element function	Changeover switch
Switch-on point	-0.25 bar
Switch-off point	0.1 bar
Max. switching frequency	1 Hz
Minimum load current	100 mA
Operating voltage range AC	12 V...250 V
DC operating voltage range	12 V...250 V
Utilization category for inductive load	AC-14 DC-13
Utilization category for ohmic load	AC-12 DC-12
Electrical connection	3 connecting wires
Electrical connection 1, connection technology	Open end
Cable length	0.5 m
Material of cable sheath	PVC
Type of mounting	On 2n mounting frame With through-hole Optionally:
Mounting position	Any

Feature	Value
Pneumatic connection	G1/8
Housing material	PA-reinforced POM Steel VMQ (silicone)
Switching contact material	Silver
Electrical connection material	Tin-plated
Diaphragm material	Chloroprene rubber
Setting options	Permanently set
Degree of protection	IP67
Insulation voltage	2 kV
LABS (PWIS) conformity	VDMA24364-B1/B2-L
Contamination level	3