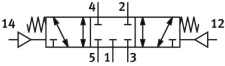
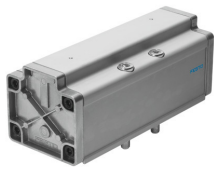


Pneumatic valve

VL-5/3G-3/4-D-4

Part number: 12463

FESTO



Data sheet

| Feature | Value |
|--|--|
| Valve function | 5/3, closed |
| Actuation type | Pneumatic |
| Width | 76 mm |
| Standard nominal flow rate | 4800 l/min |
| Pneumatic working port | Sub-base, size 4 as per ISO 5599-1 G3/4 |
| Operating pressure | -0.9 bar...16 bar |
| Structural design | Piston gate valve |
| Reset method | Mechanical spring |
| Nominal width | 18 mm |
| Width dimension | 82 mm |
| Exhaust air function | With flow control option |
| Sealing principle | Soft |
| Mounting position | Any |
| Conforms to standard | ISO 5599-1 |
| Manual override | None |
| ISO code | 406 |
| Type of control | Direct |
| Flow direction | Reversible |
| Lap | Overlap |
| Pilot pressure | 3 bar...16 bar |
| Switching time off | 130 ms |
| On switching time | 40 ms |
| Operating medium | Compressed air as per ISO 8573-1:2010 [7:4:4] |
| Information on operating and pilot media | Operation with oil lubrication possible (required for further use) |
| LABS (PWIS) conformity | VDMA24364-B1/B2-L |
| Temperature of medium | -10 °C...60 °C |
| Noise level | 85 dB(A) |
| Pilot medium | Compressed air as per ISO 8573-1:2010 [7:4:4] |
| Ambient temperature | -10 °C...60 °C |
| Product weight | 2000 g |

| Feature | Value |
|------------------------|--|
| Type of mounting | On sub-base With through-hole and screw |
| Pilot air port 12 | Sub-base, size 4 as per ISO 5599-1 |
| Pilot air port 14 | Sub-base, size 4 as per ISO 5599-1 |
| Pneumatic connection 1 | Sub-base, size 4 as per ISO 5599-1 |
| Pneumatic connection 2 | Sub-base, size 4 as per ISO 5599-1 |
| Pneumatic connection 3 | Sub-base, size 4 as per ISO 5599-1 |
| Pneumatic connection 4 | Sub-base, size 4 as per ISO 5599-1 |
| Pneumatic connection 5 | Sub-base, size 4 as per ISO 5599-1 |
| Note on materials | RoHS-compliant |
| Seals material | NBR |
| Housing material | Aluminum |