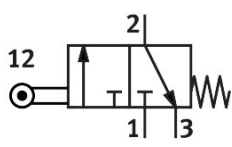


End stop limit switch SVK-3-PK-3

Part number: 12146



Data sheet

Feature	Value
Valve function	3/2, closed, monostable
Actuation type	Mechanical
Standard nominal flow rate	50 l/min
Pneumatic working port	PK-3
Operating pressure	-0.9 bar...8 bar
Structural design	Ball seat
Reset method	Mechanical spring
Nominal width	1.5 mm
Sealing principle	Soft
Mounting position	Any
Type of control	Direct
Flow direction	Non-reversible
Operating medium	Compressed air as per ISO 8573-1:2010 [7:4:4]
Information on operating and pilot media	Operation with oil lubrication possible (required for further use)
LABS (PWIS) conformity	VDMA24364 zone III
Temperature of medium	-10 °C...80 °C
Ambient temperature	-10 °C...80 °C
Type of mounting	With through-hole
Pneumatic connection 1	PK-3
Pneumatic connection 2	PK-3
Pneumatic connection 3	Not ducted