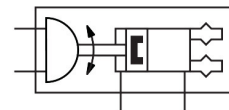
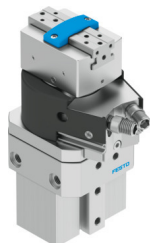


Swivel/gripper unit HGDS-PP-16-P1-A-B

Part number: 1187959

FESTO



Data sheet

Feature	Value
Size	16
Adjustment range of swivel angle	0 deg...210 deg
Stroke per gripper jaw	4.5 mm
Max. gripper jaw angular play ax, ay	0.1 deg
Max. gripper jaw backlash Sz	0.02 mm
Swivel angle	210 deg
Pneumatic gripper repetition accuracy	0.01 mm
Repetition accuracy of swivel angle	0.02 deg
Number of gripper jaws	2
Quarter turn actuator cushioning	Elastic cushioning rings/pads at both ends, adjustable end positions, with fixed stop
Cushioning	Elastic cushioning rings/pads at both ends with fixed stop
Cushioning adjustment range	2.6 mm
Mounting position	Any
Quarter turn actuator fine tuning	-6 deg
Mode of operation	Double-acting
Gripper function	Parallel
Structural design	Quarter turn actuator with parallel gripper and gripper actuator
Position sensing, pneumatic gripper	With proximity sensor
Quarter turn actuator position sensing	With proximity sensor
Operating pressure	3 bar...8 bar
Max. operating frequency of pneumatic gripper	4 Hz
Max. swivel frequency at 6 bar	2 Hz
Min. opening time at 6 bar	40 ms
Min. closing time at 6 bar	60 ms
Operating medium	Compressed air as per ISO 8573-1:2010 [7:4:4]
Information on operating and pilot media	Operation with oil lubrication possible (required for further use)
Corrosion resistance class (CRC)	2 - Moderate corrosion stress
LABS (PWIS) conformity	VDMA24364-B2-L
Ambient temperature	5 °C...60 °C

Feature	Value
Gripping force per gripper jaw at 6 bar, opening	58 N 116 N
Gripping force per gripper jaw at 6 bar, closing	51 N 102 N
Maximum force on gripper jaw Fz, static	150 N
Maximum torque on gripper jaw, Mx static	11 Nm
Maximum torque on gripper jaw, My static	11 Nm
Maximum torque on gripper jaw, Mz static	11 Nm
Theoretical torque at 6 bar	1.25 Nm
Product weight	730 g
Max. mass per external gripper finger	50 g
Max. mass per external gripper finger, throttled	100 g
Type of mounting	With internal thread and centering sleeve Via through-hole and centering sleeve With dovetail slot Optionally:
Pneumatic connection	M5
Note on materials	RoHS-compliant
Drive shaft material	Steel
Cover material	Aluminum POM
Seals material	NBR
Housing material	Wrought aluminum alloy
Gripper jaw material	High-alloy stainless steel