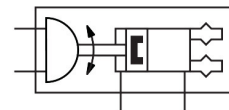
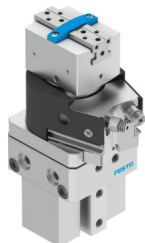


# Swivel/gripper unit HGDS-PP-12-P-A-B

Part number: 1187955

**FESTO**



## Data sheet

| Feature  | Value  |
|--|--|
| Size   | 12   |
| Adjustment range of swivel angle                 | 0 deg...210 deg  |
| Stroke per gripper jaw                           | 2.5 mm   |
| Max. gripper jaw angular play ax, ay             | 0.1 deg  |
| Max. gripper jaw backlash Sz                     | 0.02 mm  |
| Swivel angle                                     | 210 deg  |
| Pneumatic gripper repetition accuracy            | 0.01 mm  |
| Repetition accuracy of swivel angle              | 0.2 deg  |
| Number of gripper jaws                           | 2  |
| Quarter turn actuator cushioning                 | Elastic cushioning rings/pads at both ends                         |
| Cushioning                                       | Elastic cushioning rings/pads at both ends                         |
| Cushioning adjustment range                      | 2 mm   |
| Mounting position                                | Any  |
| Quarter turn actuator fine tuning                | -6 deg   |
| Mode of operation                                | Double-acting  |
| Gripper function                                 | Parallel   |
| Structural design                                | Quarter turn actuator with parallel gripper and gripper actuator   |
| Position sensing, pneumatic gripper              | With proximity sensor  |
| Quarter turn actuator position sensing           | With proximity sensor  |
| Operating pressure                               | 3 bar...8 bar  |
| Max. operating frequency of pneumatic gripper    | 4 Hz   |
| Max. swivel frequency at 6 bar                   | 2 Hz   |
| Min. opening time at 6 bar                       | 40 ms  |
| Min. closing time at 6 bar                       | 60 ms  |
| Operating medium                                 | Compressed air as per ISO 8573-1:2010 [7:4:4]                      |
| Information on operating and pilot media         | Operation with oil lubrication possible (required for further use) |
| Corrosion resistance class (CRC)                 | 2 - Moderate corrosion stress                                      |
| LABS (PWIS) conformity                           | VDMA24364-B2-L   |
| Ambient temperature                              | 5 °C...60 °C   |
| Gripping force per gripper jaw at 6 bar, opening | 42 N<br>84 N   |

| Feature  | Value   |
|--|---|
| Gripping force per gripper jaw at 6 bar, closing | 37 N<br>74 N  |
| Maximum force on gripper jaw Fz, static          | 90 N  |
| Maximum torque on gripper jaw, Mx static         | 6 Nm  |
| Maximum torque on gripper jaw, My static         | 6 Nm  |
| Maximum torque on gripper jaw, Mz static         | 6 Nm  |
| Theoretical torque at 6 bar                      | 0.85 Nm   |
| Product weight                                   | 505 g   |
| Max. mass per external gripper finger            | 30 g  |
| Max. mass per external gripper finger, throttled | 100 g   |
| Type of mounting                                 | With internal thread and centering sleeve<br>Via through-hole and centering sleeve<br>With dovetail slot<br>Optionally: |
| Pneumatic connection                             | M5  |
| Note on materials                                | RoHS-compliant  |
| Drive shaft material                             | Steel   |
| Cover material                                   | Aluminum<br>POM   |
| Seals material                                   | NBR   |
| Housing material                                 | Wrought aluminum alloy  |
| Gripper jaw material                             | High-alloy stainless steel  |