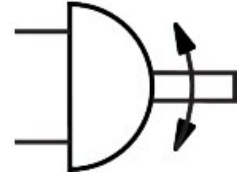
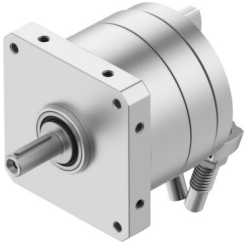


Rotary actuator DSM-T-12-270-CC-A-B

Part number: 1145088

FESTO



Data sheet

| Feature | Value |
|--|--|
| Size | 12 |
| Cushioning angle | 15 deg |
| Adjustment range of swivel angle | 0 deg...246 deg |
| Swivel angle | 0 deg...246 deg |
| Permissible stop radius | 15 mm |
| Cushioning | Pneumatic shock absorber at both ends |
| Mounting position | Any |
| Precision adjustment | -3 deg |
| Mode of operation | Double-acting |
| Structural design | Rotary vane |
| Position sensing | For proximity sensor |
| Operating pressure | 0.25 MPa...1 MPa 2.5 bar...10 bar |
| Max. swivel frequency at 6 bar | 1.5 Hz |
| Repetition accuracy | 0.1 deg |
| Operating medium | Compressed air as per ISO 8573-1:2010 [7:-:-] |
| Information on operating and pilot media | Operation with oil lubrication possible (required for further use) |
| Corrosion resistance class (CRC) | 0 - No corrosion stress |
| LABS (PWIS) conformity | VDMA24364-B2-L |
| Ambient temperature | -10 °C...60 °C |
| Max. stop force | 90 N |
| Max. axial force | 18 N |
| Max. radial force | 45 N |
| Theoretical torque at 6 bar | 2.5 Nm |
| Permissible mass moment of inertia | 0.008 kgm ² |
| Product weight | 375 g |
| Type of mounting | With internal thread |
| Pneumatic connection | M5 |
| Note on materials | RoHS-compliant |
| Drive shaft material | Steel Nickel-plated |
| Seals material | TPE-U(PU) |

| Feature | Value |
|------------------|------------------------|
| Housing material | Wrought aluminum alloy |