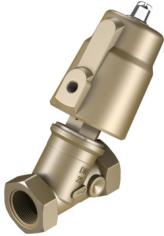


Angle seat valve VZXF-L-M22C-M-B-N1-230-H3B1-50-10

Part number: 1002538

FESTO



Data sheet

Feature	Value
Structural design	Poppet valve with piston actuator
Actuation type	Pneumatic
Sealing principle	Soft
Mounting position	Any
Type of mounting	Line installation
Cable connection	Threaded sleeve 1 NPT as per ANSI/ASME B 1.20.1
Nominal width	23 mm
Valve function	2/2, closed, monostable
Flow direction	Non-reversible Under valve seat, for gaseous and liquid media
Medium pressure	0 MPa...1 MPa 0 bar...10 bar
Nominal pressure of fitting PN	16
Exhaust air function	Without flow control option
Reset method	Mechanical spring
Type of control	Externally controlled
Pneumatic connection	Internal thread G1/8
Operating pressure	0.6 MPa...1 MPa 6 bar...10 bar 87 psi...145 psi
Medium	Vapor Hydraulic fluid based on mineral oil Inert gas Mineral oil Water Filtered compressed air, 200 µm filter mesh Neutral liquids
Operating medium	Compressed air as per ISO 8573-1:2010 [7:4:4]
Max. viscosity	600 mm ² /s
Temperature of medium	-10 °C...80 °C
Ambient temperature	-10 °C...60 °C
Flow rate Kv	9.6 m ³ /h
Note on materials	RoHS-compliant
LABS (PWIS) conformity	VDMA24364 zone III

Feature	Value
Valve housing material	Red brass
Material number, fitting housing	CC499K
Spindle seal material	NBR
Seat seal material	PTFE
Product weight	1500 g
Corrosion resistance class (CRC)	1 - Low corrosion stress
Drive housing material	Brass