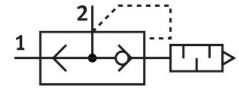


Quick exhaust valve SEU-3/8-NPT

Part number: 9800

FESTO



Data sheet

Feature	Value
Valve function	Quick exhaust
Selection of additional functions	With silencer
Pneumatic connection, port 1	3/8 NPT
Pneumatic connection, port 2	3/8 NPT
Type of mounting	Screw-in
Standard nominal flow rate, exhaust 0.6->0.5 MPa (6->5 bar, 87->72.5 psi)	2280 l/min
Standard nominal flow rate, exhaust 0.6->0 MPa (6->0 bar, 87->0 psi)	4680 l/min
Standard nominal flow rate, air flow 0.6->0,5 MPa (6->5 bar, 87->72.5 psi)	2880 l/min
Operating pressure	0.2 bar...10 bar
Ambient temperature	-20 °C...75 °C
Operating medium	Compressed air to ISO 8573-1:2010 [7:-:-]
Nominal size	11 mm
Note on operating and pilot medium	Lubricated operation possible (in which case lubricated operation will always be required)
LABS (PWIS) conformity	VDMA24364-B1/B2-L
Media temperature	-20 °C...75 °C
Sound pressure level	83 dB(A)
Note on materials	RoHS-compliant