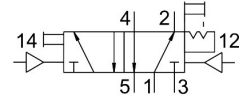


Pneumatic valve

JH-5-1/8

Part number: 8823

FESTO



Data sheet

| Feature | Value |
|---|--|
| Valve function | 5/2 double solenoid |
| Type of actuation | Pneumatic |
| Construction width | 26 mm |
| Standard nominal flow rate (standardised to DIN 1343) | 600 l/min |
| pneumatic working port | G1/8 |
| Operating pressure | 0 MPa...1 MPa 0 bar...10 bar |
| Design | Poppet seat |
| Nominal size | 5 mm |
| Grid dimension | 27 mm |
| Exhaust-air function | With flow control option |
| Sealing principle | Soft |
| Mounting position | optional |
| Type of piloting | Direct |
| Pilot air supply | External |
| Flow direction | Non-reversible |
| lap | Underlap |
| Pilot pressure | 0.12 MPa...1 MPa 1.2 bar...10 bar |
| Max. switching frequency | 12 Hz |
| Switching time reversal | 7 ms |
| Operating medium | Compressed air to ISO 8573-1:2010 [7:4:4] |
| Note on operating and pilot medium | Lubricated operation possible (in which case lubricated operation will always be required) |
| Corrosion resistance class CRC | 1 - Low corrosion stress |
| LABS (PWIS) conformity | VDMA24364-B1/B2-L |
| Storage temperature | -20 °C...60 °C |
| Media temperature | -10 °C...60 °C |
| Ambient temperature | -10 °C...60 °C |
| Product weight | 330 g |
| Type of mounting | On manifold rail With through-hole Either: |

| Feature | Value |
|------------------------------|--------------------|
| Pilot air port 12 | G1/8 |
| Pilot air port 14 | G1/8 |
| Pneumatic connection, port 1 | G1/8 |
| Pneumatic connection, port 2 | G1/8 |
| Pneumatic connection, port 3 | G1/8 |
| Pneumatic connection, port 4 | G1/8 |
| Pneumatic connection, port 5 | G1/8 |
| Note on materials | RoHS-compliant |
| Material seals | NBR TPE-U(PU) |
| Material housing | Die-cast aluminium |