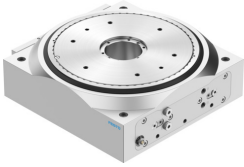


Rotary indexing table DHTG-220-24-A-L

Part number: 8213389

FESTO



Data sheet

| Feature | Value |
|-------------------------------------|--|
| Size | 220 |
| Parallelity poppet valve | 0.04 mm |
| Axial eccentricity poppet valve | 0.02 mm |
| Concentricity poppet valve | 0.02 mm |
| Repetition accuracy of swivel angle | 0.03 deg |
| Direction of rotation | Anticlockwise rotation |
| Cushioning | Shock absorber, hard characteristic curve, adjustable |
| Mounting position | optional |
| Mode of operation | Double-acting |
| Design | Gear coupling Rack and pinion Force pilot operated motion sequence |
| Position detection | Via inductive sensors |
| Pitch | 24 |
| Operating pressure | 0.3 MPa...0.8 MPa 3 bar...8 bar |
| Operating medium | Compressed air to ISO 8573-1:2010 [7:4:4] |
| Note on operating and pilot medium | Lubricated operation possible (in which case lubricated operation will always be required) |
| Corrosion resistance class CRC | 2 - Moderate corrosion stress |
| LABS (PWIS) conformity | VDMA24364-B2-L |
| Storage temperature | -20 °C...80 °C |
| Sound pressure level | 70 dB(A) |
| Degree of protection | IP54 |
| Ambient temperature | 5 °C...60 °C |
| Mass moment of inertia | 25000 kgcm ² |
| Max. axial force static | 5000 N |
| Max. pull-out torque static | 500 Nm |

| Feature | Value |
|---|--------------------------------------|
| Max. radial force static | 8000 N |
| Max. tangential torque static | 500 Nm |
| Theoretical torque at 0.6 MPa (6 bar, 87 psi) | 58.9 Nm |
| Product weight | 24000 g |
| Type of mounting | Via through-hole and centring sleeve |
| Pneumatic connection | Female thread G1/8 |
| Material poppet valve | Galvanised steel |
| Note on materials | RoHS-compliant |
| Material stops | Galvanised steel |
| Material cover | Wrought aluminium alloy |
| Material seals | NBR TPE-U(PU) |
| Material housing | Wrought aluminium alloy |