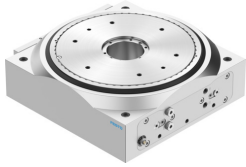


# Rotary indexing table DHTG-220-8-A-L

Part number: 8213387

**FESTO**



## Data sheet

| Feature                             | Value  |
|-------------------------------------|--|
| Size                                | 220  |
| Parallelity poppet valve            | 0.04 mm  |
| Axial eccentricity poppet valve     | 0.02 mm  |
| Concentricity poppet valve          | 0.02 mm  |
| Repetition accuracy of swivel angle | 0.03 deg   |
| Direction of rotation               | Anticlockwise rotation   |
| Cushioning                          | Shock absorber, hard characteristic curve, adjustable                                      |
| Mounting position                   | optional   |
| Mode of operation                   | Double-acting  |
| Design                              | Gear coupling<br>Rack and pinion<br>Force pilot operated motion sequence                   |
| Position detection                  | Via inductive sensors  |
| Pitch                               | 8  |
| Operating pressure                  | 0.3 MPa...0.8 MPa<br>3 bar...8 bar   |
| Operating medium                    | Compressed air to ISO 8573-1:2010 [7:4:4]  |
| Note on operating and pilot medium  | Lubricated operation possible (in which case lubricated operation will always be required) |
| Corrosion resistance class CRC      | 2 - Moderate corrosion stress  |
| LABS (PWIS) conformity              | VDMA24364-B2-L   |
| Storage temperature                 | -20 °C...80 °C   |
| Sound pressure level                | 70 dB(A)   |
| Degree of protection                | IP54   |
| Ambient temperature                 | 5 °C...60 °C   |
| Mass moment of inertia              | 25000 kgcm <sup>2</sup>  |
| Max. axial force static             | 5000 N   |
| Max. pull-out torque static         | 500 Nm   |

| Feature                                       | Value                                |
|---|--------------------------------------|
| Max. radial force static                      | 8000 N                               |
| Max. tangential torque static                 | 500 Nm                               |
| Theoretical torque at 0.6 MPa (6 bar, 87 psi) | 58.9 Nm                              |
| Product weight                                | 24000 g                              |
| Type of mounting                              | Via through-hole and centring sleeve |
| Pneumatic connection                          | Female thread G1/8                   |
| Material poppet valve                         | Galvanised steel                     |
| Note on materials                             | RoHS-compliant                       |
| Material stops                                | Galvanised steel                     |
| Material cover                                | Wrought aluminium alloy              |
| Material seals                                | NBR<br>TPE-U(PU)                     |
| Material housing                              | Wrought aluminium alloy              |