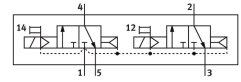


Solenoid valve VSVA-B-T32C-AD-D2-F8

Part number: 8198593

FESTO



Data sheet

| Feature | Value |
|--|-----------------------------------|
| Valve function | 2x3/2-way, monostable, closed |
| Type of actuation | Electric |
| Construction width | 52 mm |
| Nominal flow rate standardised according to ISO 8778 | 3100 l/min |
| pneumatic working port | Sub-base size 2 to ISO 5599-1 |
| Operating pressure | 0.3 MPa...1 MPa 3 bar...10 bar |
| Design | Piston gate valve |
| Type of reset | Pneumatic spring |
| Degree of protection | IP65 NEMA 4 |
| Nominal size | 11.5 mm |
| Grid dimension | 53 mm |
| Exhaust-air function | Via individual sub-base |
| Sealing principle | Soft |
| Mounting position | optional |
| Conforms to standard | ISO 5599-1 |
| Manual override | Detenting |
| Type of piloting | Pilot actuated |
| Pilot air supply | Internal |
| Flow direction | Non-reversible |
| lap | Overlap |
| Pilot pressure | 0.3 MPa...1 MPa 3 bar...10 bar |
| Suitability for vacuum | no |
| b value | 0.34 |
| C value | 6.267 l/sbar |
| Flow rate of valve | 2900 l/min |
| Flow rate of valve on individual sub-base | 2500 l/min |
| Flow rate of pneumatically interlinked valve | 2300 l/min |
| Max. switching frequency | 5 Hz |
| Switching time off | 50 ms |

| Feature | Value |
|---|--|
| Switching time on | 25 ms |
| Duty cycle | 100% |
| Operating medium | Compressed air to ISO 8573-1:2010 [7:4:4] |
| Note on operating and pilot medium | Lubricated operation possible (in which case lubricated operation will always be required) |
| LABS (PWIS) conformity | VDMA24364-B1/B2-L |
| Media temperature | -10 °C...50 °C |
| Relative air humidity | 0 - 90% |
| Sound pressure level | 85 dB(A) |
| Pilot medium | Compressed air to ISO 8573-1:2010 [7:4:4] |
| Ambient temperature | -10 °C...50 °C |
| Max. tightening torque for valve mounting | 2 Nm |
| Product weight | 680 g |
| Type of mounting | On sub-base |
| Pilot air port 12 | Sub-base size 2 to ISO 5599-1 |
| Pilot air port 14 | Sub-base size 2 to ISO 5599-1 |
| Pneumatic connection, port 1 | Sub-base size 2 to ISO 5599-1 |
| Pneumatic connection, port 2 | Sub-base size 2 to ISO 5599-1 |
| Pneumatic connection, port 3 | Sub-base size 2 to ISO 5599-1 |
| Pneumatic connection, port 4 | Sub-base size 2 to ISO 5599-1 |
| Pneumatic connection, port 5 | Sub-base size 2 to ISO 5599-1 |
| Pilot control interface | To ISO 15218 |
| Note on materials | RoHS-compliant |
| Material seals | NBR |
| Material housing | Die-cast aluminium |
| Material screws | Steel |