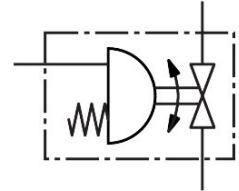
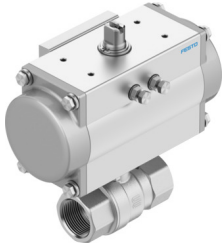


# Ball valve unit VAPB-A-2 1/2-F-25-F07-PB160

Part number: 8191934

**FESTO**



## Data sheet

| Feature   | Value  |
|---|--|
| Design  | 2-way ball valve<br>Semi-rotary drive  |
| Type of actuation   | Pneumatic  |
| Sealing principle   | Soft   |
| Mounting position   | optional   |
| Type of mounting  | In-line installation   |
| Connection Process valve  | Rp2 1/2  |
| Switching position indicator  | Slot direction = flow direction  |
| Flange hole pattern   | F07  |
| Nominal size DN   | 63   |
| Valve function  | 2/2  |
| Flow direction  | Reversible   |
| Operating pressure  | 0.55 MPa...0.8 MPa<br>5.5 bar...8 bar<br>79.75 psi...116 psi   |
| Nominal pressure PN   | 25   |
| Breakaway torque at differential pressure, nominal pressure, process valve PN | 45 Nm  |
| Based on standard   | EN 10226-1<br>ISO 5211   |
| Medium  | Compressed air to ISO 8573-1:2010 [:-:-]<br>Inert gases<br>Water – no water vapour<br>Neutral fluids<br>Other media on request |
| Operating medium  | Compressed air to ISO 8573-1:2010 [7:4:4]  |
| Note on operating and pilot medium  | Lubricated operation possible (in which case lubricated operation will always be required)                                     |
| Media temperature   | -10 °C...200 °C  |
| Flow rate Kv  | 535 m³/h   |
| Note on materials   | RoHS-compliant   |
| LABS (PWIS) conformity  | VDMA24364 zone III   |
| Material housing  | Brass, nickel-plated   |

| Feature                        | Value                       |
|--------------------------------|-----------------------------|
| Material number housing        | 2.0402<br>CW617N            |
| Material seat seal             | PTFE                        |
| Material seals                 | HNBR<br>PTFE                |
| Material ball                  | Brass<br>Hard-chrome-plated |
| Material number ball           | 2.0402<br>CW617N            |
| Material shaft                 | Brass                       |
| Material number shaft          | 2.0401<br>CW614N            |
| Product weight                 | 12720 g                     |
| Corrosion resistance class CRC | 1 - Low corrosion stress    |