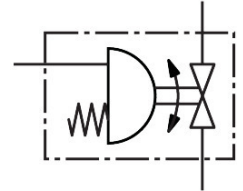
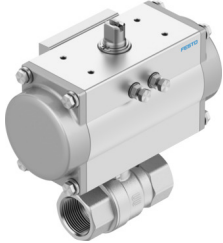


Ball valve unit VAPB-A-2-F-25-F05-PB80

Part number: 8191933

FESTO



Data sheet

Feature	Value
Design	2-way ball valve Semi-rotary drive
Type of actuation	Pneumatic
Sealing principle	Soft
Mounting position	optional
Type of mounting	In-line installation
Connection Process valve	Rp2
Switching position indicator	Slot direction = flow direction
Flange hole pattern	F05
Nominal size DN	50
Valve function	2/2
Flow direction	Reversible
Operating pressure	0.55 MPa...0.8 MPa 5.5 bar...8 bar 79.75 psi...116 psi
Nominal pressure PN	25
Breakaway torque at differential pressure, nominal pressure, process valve PN	29 Nm
Based on standard	EN 10226-1 ISO 5211
Medium	Compressed air to ISO 8573-1:2010 [-:-:-] Inert gases Water – no water vapour Neutral fluids Other media on request
Operating medium	Compressed air to ISO 8573-1:2010 [7:4:4]
Note on operating and pilot medium	Lubricated operation possible (in which case lubricated operation will always be required)
Media temperature	-10 °C...200 °C
Flow rate Kv	292 m³/h
Note on materials	RoHS-compliant
LABS (PWIS) conformity	VDMA24364 zone III
Material housing	Brass, nickel-plated

Feature	Value
Material number housing	2.0402 CW617N
Material seat seal	PTFE
Material seals	HNBR PTFE
Material ball	Brass Hard-chrome-plated
Material number ball	2.0402 CW617N
Material shaft	Brass
Material number shaft	2.0401 CW614N
Product weight	7270 g
Corrosion resistance class CRC	1 - Low corrosion stress