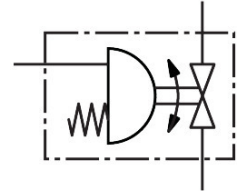
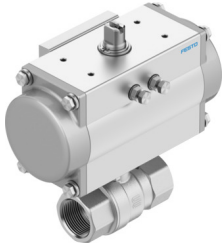


Ball valve unit

VAPB-A-3/8-F-40-F03-PB20

Part number: 8191927

FESTO



Data sheet

Feature	Value
Design	2-way ball valve Semi-rotary drive
Type of actuation	Pneumatic
Sealing principle	Soft
Mounting position	optional
Type of mounting	In-line installation
Connection Process valve	Rp3/8
Switching position indicator	Slot direction = flow direction
Flange hole pattern	F03
Nominal size DN	15
Valve function	2/2
Flow direction	Reversible
Operating pressure	0.55 MPa...0.8 MPa 5.5 bar...8 bar 79.75 psi...116 psi
Nominal pressure PN	40
Breakaway torque at differential pressure, nominal pressure, process valve PN	5 Nm
Based on standard	EN 10226-1 ISO 5211
Medium	Compressed air to ISO 8573-1:2010 [-::-] Inert gases Water – no water vapour Neutral fluids Other media on request
Operating medium	Compressed air to ISO 8573-1:2010 [7:4:4]
Note on operating and pilot medium	Lubricated operation possible (in which case lubricated operation will always be required)
Media temperature	-10 °C...200 °C
Flow rate Kv	9.4 m³/h
Note on materials	RoHS-compliant
LABS (PWIS) conformity	VDMA24364 zone III
Material housing	Brass, nickel-plated

Feature	Value
Material number housing	2.0402 CW617N
Material seat seal	PTFE
Material seals	HNBR PTFE
Material ball	Brass Hard-chrome-plated
Material number ball	2.0401 CW614N
Material shaft	Brass
Material number shaft	2.0401 CW614N
Product weight	1880 g
Corrosion resistance class CRC	1 - Low corrosion stress