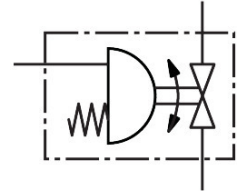


Ball valve unit

VZBE-A-3/8-T-63-T-2-F0304-V15V15-PB20

Part number: 8191907

FESTO



Data sheet

Feature	Value
Design	2-way ball valve Semi-rotary drive
Type of actuation	Pneumatic
Sealing principle	Soft
Mounting position	optional
Type of mounting	In-line installation
Connection Process valve	3/8 NPT
Switching position indicator	Slot direction = flow direction
Flange hole pattern	F0304
Nominal size DN	10
Valve function	2/2
Flow direction	Reversible
Operating pressure	0.55 MPa...0.8 MPa 5.5 bar...8 bar 79.75 psi...116 psi
Nominal pressure PN	63
Breakaway torque at differential pressure, nominal pressure, process valve PN	7 Nm
Based on standard	ASME B1.20.1 ISO 5211
Medium	Compressed air to ISO 8573-1:2010 [-::-] Inert gases Water – no water vapour Neutral fluids Other media on request
Operating medium	Compressed air to ISO 8573-1:2010 [7:4:4]
Note on operating and pilot medium	Lubricated operation possible (in which case lubricated operation will always be required)
Media temperature	-10 °C...200 °C
Flow rate Kv	22 m³/h
Max. surface temperature assembly	+105 °C...+280 °C T4...T2
explosion group assembly	IIC, IIIC
Note on materials	RoHS-compliant

Feature	Value
LABS (PWIS) conformity	VDMA24364 zone III
Material housing	Stainless steel casting
Material number housing	1.4408
Material seat seal	PTFE
Material seals	FPM PTFE
Material ball	Stainless steel casting
Material number ball	1.4408
Material shaft	High-alloy stainless steel
Product weight	1935 g
Explosion protection	Zone 1 (ATEX) Zone 2 (ATEX) Zone 21 (ATEX) Zone 22 (ATEX)
Explosion ambient temperature	-10 °C ≤ Ta ≤ +80 °C
Corrosion resistance class CRC	1 - Low corrosion stress